



"Grab 'n' Go"

Library Services

JULY 20th

**SOUTH COUNTRY
LIBRARY
RE-OPENING**

**WELCOME
BACK!**

Library visits are limited to 1 hour.

Library capacity will be limited to 30 visitors at one time.

**Curbside service continues for library
materials and printing,**

**Wi-Fi internet access continues in the
library parking lot.**

Patrons may:

- Browse and checkout materials and pick up holds in person.
- Access the business center (faxing, scanning, copying). Please allow Patron Services Staff to perform these services for you.
- Use a computer and print. All ages may access computers in Reference/YA Department. (Children must have an adult.) Sessions are 30 minutes; may be extended to an hour if no one is waiting.
- Obtain reference assistance at the adult, young adult and children's desks.

Patrons may not:

- Access Children's department. It remains closed until further notice. Librarians will retrieve items and provide assistance.
- Access seating (except computer chairs while using computer). Café and main hallway seating, and all quiet study and tutoring rooms remain off limits until further notice.

The library follows a variety of protocols for overall safety and disinfection. However, patrons accept all risk of using the library facility and its contents.

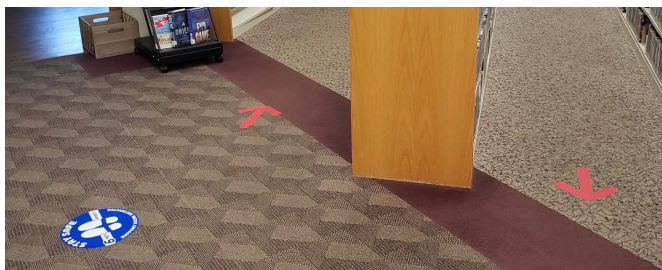


One hand sanitizer station is located across from our Patron Services desk, after you enter the library.

Another one is located on your left as you walk through the doorway to the Reference area.

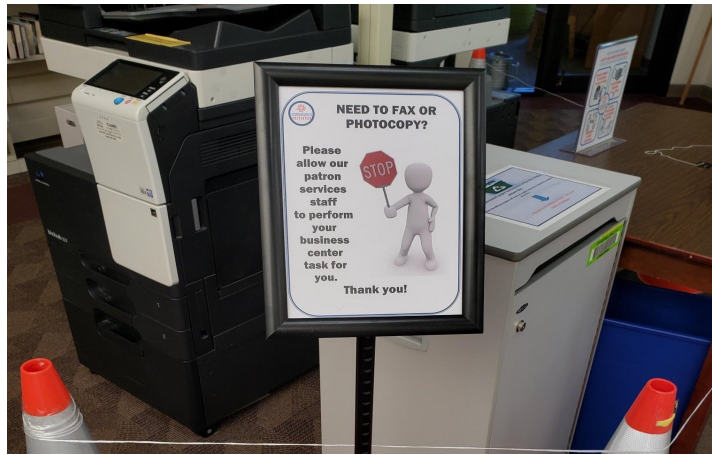
Chairs have been removed to discourage congregating and encourage quick visits.

There are still books in the Cafe area, including displays that you are welcome to take a look at and borrow.



Directional arrows and six-feet spacing markers have been placed on the floor around the library to assist with social distancing.

Our staff will be handling all faxing and photocopying of materials.



Computers have been spaced 6 feet apart for your safety. Computers are available for 30 minute sessions, with one 30 minute extension possible if no one is waiting. Help on the computers will be limited as librarians will only help remotely from the Reference Desk. We will do everything we can to assist you as long as it does not jeopardize the safety of the staff.

Our quiet study area is closed along with our tutoring rooms and meeting rooms.

