

**9/11 Memorial and Museum**  
Located at the World Trade Center  
180 Greenwich Street  
New York, NY 10007  
1 (212) 312-8800 • www.911memorial.org

**American Airpower Museum  
at Republic Airport**  
1230 New highway  
Farmingdale, NY 11735  
631-293-6398  
americanairpowermuseum.org

**Brooklyn Botanic Garden**  
990 Washington Ave  
Brooklyn, NY 11225  
718-623-7200 • bbg.org

**Children's Museum of the East End**  
376 Bridgehampton-Sag Harbor Tpke,  
Bridgehampton, NY 11932  
631-537-8250 • cmee.org

**Cradle of Aviation**  
Charles Lindbergh Blvd  
Garden City, NY 11530  
516-572-4111 • cradleofaviation.org

**Fire Island Lighthouse**  
1 Burma Rd, Bay Shore, NY 11706  
631-321-7028  
fireislandlighthouse.com

**Frick Madison (temporary location)**  
945 Madison Avenue at 75th Street  
New York, NY 10021  
212-288-0700 • frick.org

**Guggenheim Museum**  
1071 Fifth Avenue b/w 88th and 89th Streets  
New York, NY 10128  
212-423-3500 • guggenheim.org

**Harbes Barnyard Adventure**  
(May-October)  
715 Sound Avenue, Mattituck, NY 11952  
631-482-7641  
harbesfamilyfarm.com/harbes-barnyard-adventure

**Intrepid Sea, Air & Space Museum**  
Pier 86 W 46th St  
New York, NY 10036  
212-245-0072 • intrepidmuseum.org

**LongHouse Reserve**  
133 Hands Creek Rd  
East Hampton, NY 11937  
631-329-3568 • longhouse.org

**Long Island Children's Museum**  
11 Davis Ave, Garden City, NY 11530  
516-224-5800 • licm.org

**Long Island Explorium**  
Port Jeff Harbor  
101 East Broadway  
Port Jefferson, NY 11777  
631-331-3277  
longislandexplorium.org

**Long Island Museum**  
1200 NY-25A  
Stony Brook, NY 11790  
631-751-0066 • longislandmuseum.org

**Long Island Science Center**  
temporary location at  
401 Tanger Mall Dr, Riverhead, NY  
631-208-8000 • sciencecenterli.org

**New York State Empire Pass**  
for parking at NYS parks, see their  
website for list of parks  
518-474-0458 • tinyurl.com/nysempire

**Old Bethpage Village Restoration**  
(April-November)  
1303 Round Swamp Rd  
Old Bethpage, NY 11804  
Call 516-572-8409 b/w 9 am -4pm  
oldbethpagevillagerestoration.org

**Old Westbury Gardens**  
71 Old Westbury Rd  
Old Westbury, NY 11568  
516-333-0048 • oldwestburygardens.org

**Sagtikos Manor**  
(June - September)  
Montauk Highway b/w Manor Lane &  
Gardiner Drive  
West Bay Shore, NY 11706  
631-854-0939 • sagtikosmanor.org

**Sands Point Preserve**  
127 Middle Neck Road  
Sands Point, NY 11050  
516-571-7901  
sandspointpreserveconservancy.org

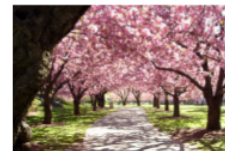
**Suffolk County Vanderbilt Museum,  
Mansion & Planetarium**  
180 Little Neck Rd  
Centerport, NY 11721  
631-854-5555 • vanderbiltmuseum.org

**Always check the museum's website  
before visiting.**

# SOUTH COUNTRY LIBRARY Museum Passes



American Airpower  
Museum



Brooklyn Botanic  
Garden



Children's Museum of  
the East End



Cradle of Aviation



Frick Collection



Harbes



Intrepid Sea, Air &  
Space Museum



Long Island Explorium



Long Island Children's  
Museum



LongHouse Reserve



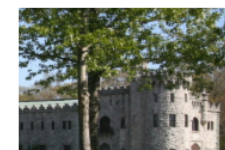
NYS Empire Pass



Old Bethpage Village  
Restoration



Old Westbury Gardens



Sands Point  
Preserve



Vanderbilt Museum &  
Planetarium

**And more museums!**

**Available for free to South Country Library adult cardholders!**

Updated August 2024

### What is the museum pass program?

The library has a variety of museum passes available for South Country cardholders. The passes allow adult cardholders to gain free entrance for a pre-determined number of guests ; each museum dictates how many people may use the pass. Library accounts must be in good standing to borrow passes and guests must abide by the conditions that each museum location has set forth.

#### Pick Up/Return Passes:

- 9/11 Memorial and Museum
- Long Island Children’s Museum
- New York State Empire Pass
- Old Bethpage Village Restoration

#### Pick Up/Return Passes

have two borrowing periods:  
Tuesday to Thursday  
or  
Friday to Monday

Reserve these passes at home or at the library.

You can use a pick up/return pass any available day during the borrowing period.

Pick up these passes at the Children’s Desk and return them by 8 pm at the end of the borrowing period.

#### Print on Demand Passes:

- American Airpower Museum
- Brooklyn Botanic Garden
- Children’s Museum of the East End
- Cradle of Aviation
- Fire Island Lighthouse
- Frick
- Guggenheim
- Harbes Barnyard Adventure (*seasonal*)
- Intrepid Sea, Air & Space Museum
- LongHouse Reserve (*seasonal*)
- Long Island Explorium
- Long Island Museum
- Long Island Science Center
- Old Westbury Gardens (*seasonal*)
- Sagtikos Manor (*seasonal*)
- Sands Point Preserve
- Suffolk County Vanderbilt Museum

#### Print on Demand passes

can be reserved and printed from home or at the library.

The pass is only usable on the date you select.

Print on demand passes do not need to be returned.

**For museum addresses & websites, see the back of this brochure**

### What am I responsible for when planning my trip?

Always check with the museum for the latest information on hours, closings and procedures. Some museums have blackout dates when the pass will not be accepted, or may not include special exhibits or events.

Additional fees are your responsibility.

**Bring both the museum pass and your library card to the museum.**

### How do I reserve a pass?

We recommend making reservations well in advance of your planned museum visit. Passes may be reserved up to 30 days in advance.

Reserve passes online at [sctylib.org/kids/museum-passes](http://sctylib.org/kids/museum-passes) or in person at the Children’s Services desk. **The borrower’s library card and photo ID will be required at the time of reservation and at pick-up.**

ONLY the cardholder of the library card number used to reserve a museum pass may pick up the pass.

### For how many days can I borrow a pass?

Print on Demand passes are valid only for the date selected.

Pick Up/Return passes have two borrowing periods you can choose from: Tuesday to Thursday or Friday to Monday. The pass is valid any day during the borrowing period (as long as the museum is open).

### How many passes may I reserve/borrow at one time?

A maximum of three passes may be reserved within a 30 day time period, and a maximum of two museum passes may be borrowed at one time.

### When must the pass be returned?

Print on Demand passes do not need to be returned.

Pick Up/Return passes :

Checked out on Tuesday—return by Thursday by 8 pm.

Checked out on Friday—return by Monday by 8 pm.

If the pass is not returned on time, a late fee of \$20 will apply for each day it is late. Passes may NOT be renewed. It is the borrower’s responsibility to know library hours and to ensure that the pass is returned on time. Please return passes directly to the Children’s Desk.

### What happens if I lose or damage a Pick/Up Return pass?

Patrons will be charged a \$50 replacement cost for any physical pass that is lost or damaged during their loan period.

### What about discount tickets?

The library also offers discounted tickets for sale.

#### Discounted tickets/vouchers *may* be available for:

- The Adventure Park at Long Island (seasonal)
- Adventureland (seasonal)
- Bronx Zoo
- Central Park Zoo
- CM Performing Arts Center
- CRESLI Whale Watching Tours (seasonal)
- The Gateway Playhouse
- Long Island Aquarium
- New York Aquarium
- Prospect Park Zoo
- Queens Zoo
- Splish Splash (seasonal)

*Prices, venues and availability subject to change.*

*Some tickets are available to purchase online, others are sold at the library.*

For the latest information on discount tickets, go to:

**<https://sctylib.org/kids/museum-passes>**

