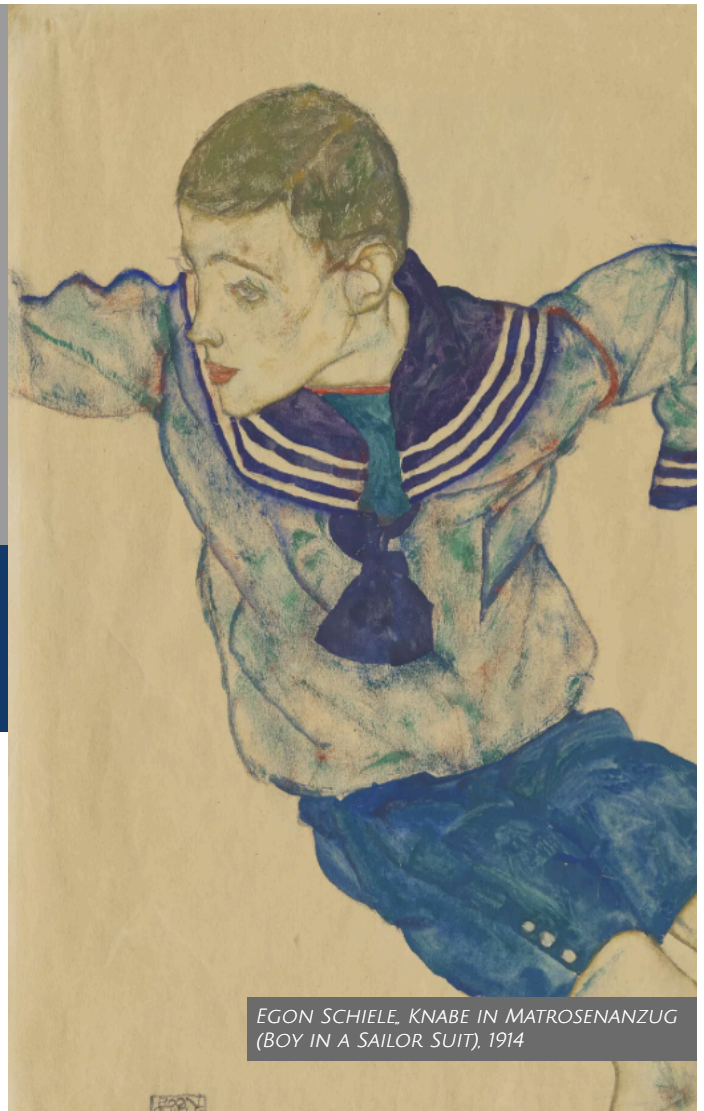


EGON SCHIELE:

NATURE, ALLEGORY,
AND THE HUMAN
CONDITION

**Thursday June 18, 2026
@ 7 PM via Zoom**

Egon Schiele, Gustav Klimt's protégé, shocked the art world with his sensual drawings, ravishing portraits, and ebullient landscapes that represent more than their apparent subject matter. His works characterize the cycle of life and the human condition in a unique and stunning way. Come and hear this presentation that will introduce you to intense, expressive works created during a productive but tragically abbreviated life.



EGON SCHIELE, KNABE IN MATROSEANZUG
(BOY IN A SAILOR SUIT), 1914



EGON SCHIELE (1890-1918)
SELBSTDARSTELLUNG MIT ORANGEFARBENEM UMHANG
(SELF-PORTRAIT WITH ORANGE CAPE)

Sponsored by the Friends of the Pennington Public Library
and the Hopewell Valley Arts Council

REGISTRATION: PENNINGTONLIBRARY/SCHIELE

Janet Mandel taught in New Jersey's public schools for 32 years, the last eighteen of which were at Columbia High School in Maplewood, where she taught English, art history, and World Languages and Cultures. Now retired, Janet presents illustrated talks on a variety of art history topics at adult schools, libraries, museums, senior centers, community centers, and similar venues.



Pennington Public Library

30 N. Main Street
Pennington, New Jersey 08534 | 609-737-0404
www.penningtonlibrary.org/